

GALIM LINE

UNCLOGGABLE SEWAGE PUMP

SS-304 Stainless steel housing.

SS-304 Stainless steel spring barrier strategically located to filter wet wipes, feminine pads, tampons and diapers.

SS-304 Stainless steel open turbine.

SS-304 built-in sewage check valve, flap valve, which allows entire solid passage up to 1"

Built in air relief valve.

Assembled and tested in USA

Pumping spherical solid up to 1" diameter.

Protects against the entry of common objects such as baskets and bathroom disinfectant, tablets, gloves, bags, toys, rope, nails, bolts, wires, cables, cans, rigid plastic, metallic sponges, rags, cutlery etc.

Motor casing built in SS-304 Stainless steel.

Nickel plated cast iron parts.

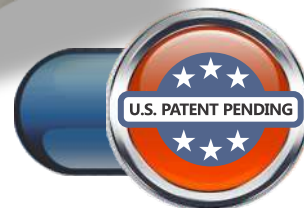
DESIGNED
ASSEMBLED
AND TESTED

IN USA



19591 NE 10th Ave - Miami, FL 33179 - BAY F & G
(786) 233-4203

www.schraiberpumpusa.com
sales@schraiberpumpusa.com

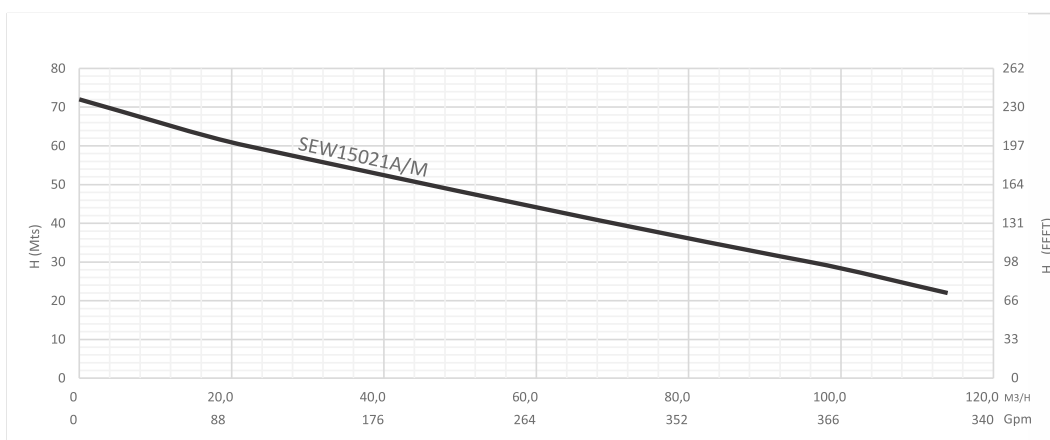
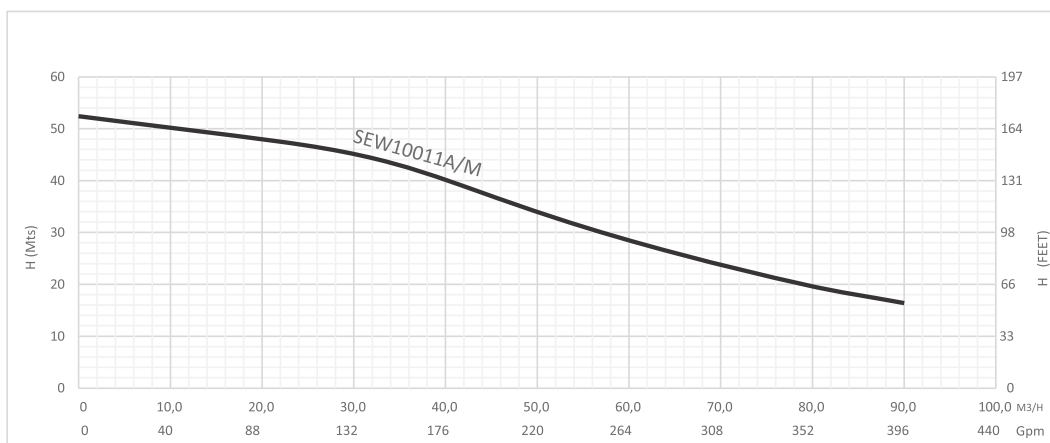
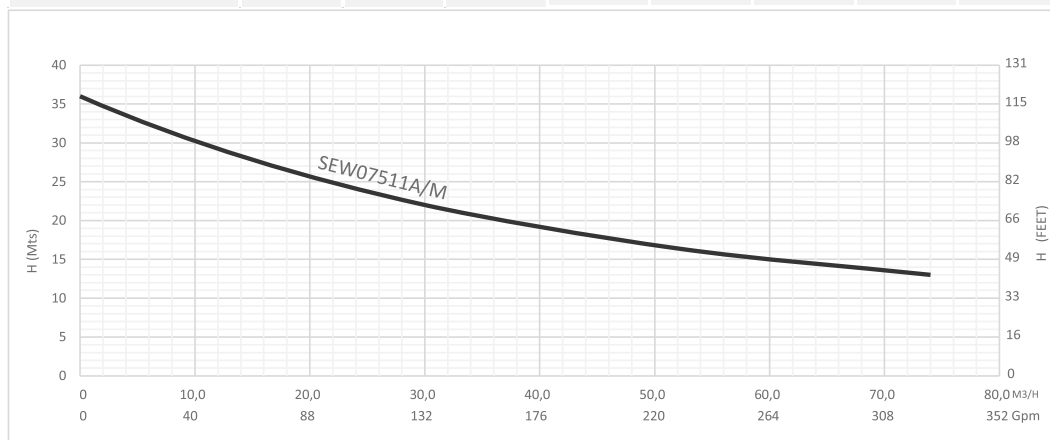


PERFORMANCE TABLES

GALIM LINE
UNCLOGGABLE SEWAGE PUMP

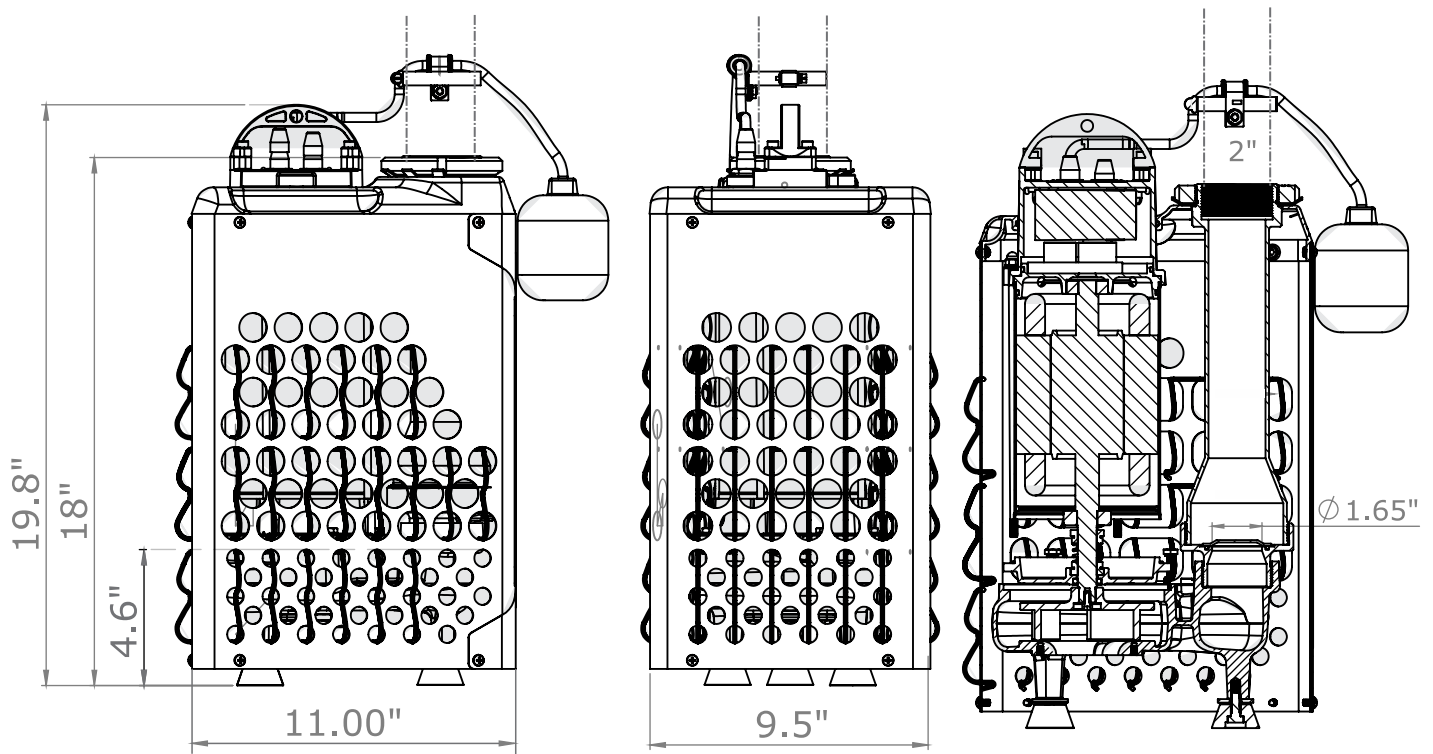
MODEL	HP	Kw	Volt	Gpm	0.0	5.0	8.0	22.0	30.0	52.0	74.0
SEW07511A/M	0.75	0.55	110	H (ft)	36	33	31	26	22	16	13
SEW10011A/M	1	0.75	110	H (ft)	52	48	44	33	26	20	16
SEW15021A/M	1.5	1	230	H (ft)	72	60	57	47	35	30	22

A: With float switch
M: Without float switch



TECHNICAL DATA

GALIM LINE UNCLOGGABLE SEWAGE PUMP

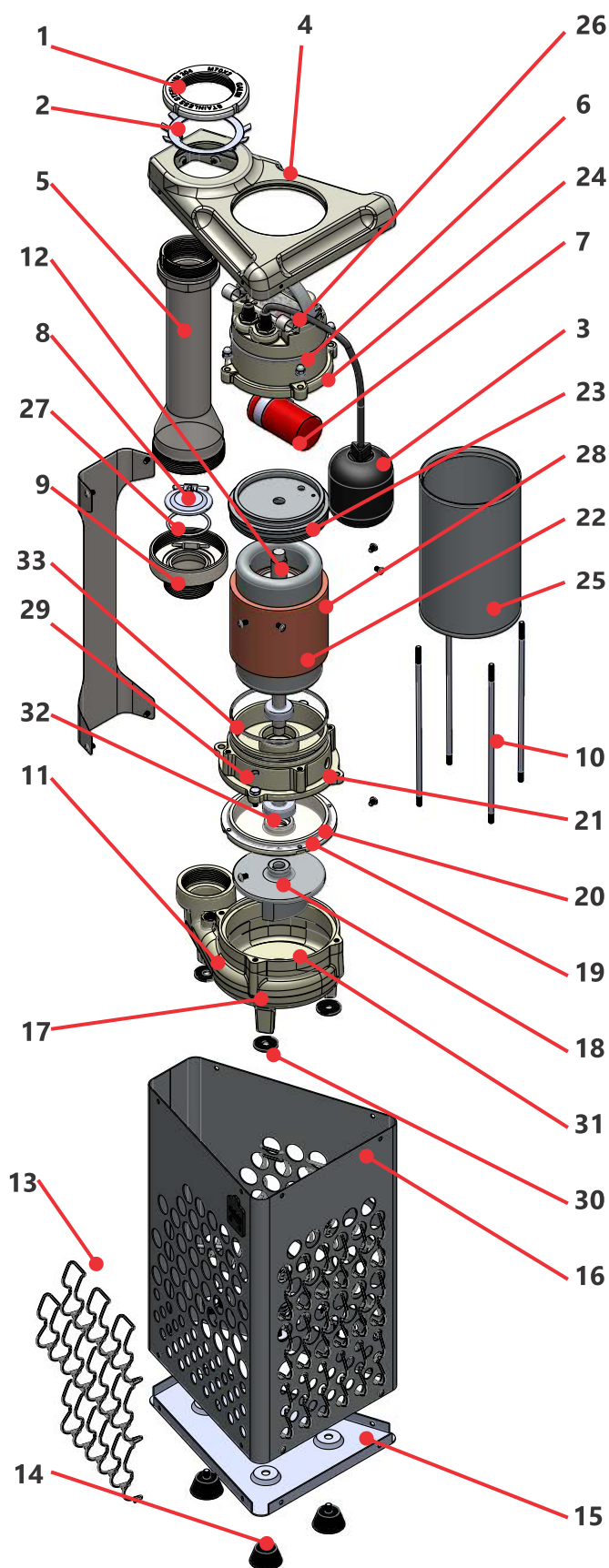


MODEL	SEW07511A	SEW10011A	SEW15021A
Q / gpm	4,4 - 73	4,4 - 96	4,4 - 115
H ft	36 - 12	53 - 17	72 - 23
Outlet	2"	2"	2"
Tem. max. F.	95 F	95 F	95 F
Volt	115 V.	115 V.	230 V.
Hz	60	60	60
RPM	3494	3494	3494
Kw	0.55	0.75	1.1
Hp	0.75	1	1.5
Current	5,2 A	9,6 A	7,6 A
Watts	543	1107	1750
Uf/v	35/250	60/250	30/450
i. cl	F	F	F
ip	68	68	68
Gross Height (Lbs)	61	69	72
Net Height (Lbs)	54	62	65

PART NAMES

GALIM LINE

UNCLOGGABLE SEWAGE PUMP



ITEM	PART NAME	DESCRIPTION
1	LOCK NUT	STAINLESS STEEL SS304
2	LOCK WASHER	STAINLESS STEEL SS304
3	SENSOR OF FLOW	ASSEMBLY
4	TOP COVER	NICKEL PLATED CAST IRON HT200
5	2" DISCHARGE PIPE	NICKEL PLATED CAST IRON HT200
6	COVER HOUSING	NICKEL PLATED CAST IRON HT200
7	CAPACITOR	ASSEMBLY
8	FLAP VALVE	STAINLESS STEEL SS304
9	HOLDER FLAP VALVE	NICKEL PLATED CAST IRON HT200
10	THREADED BARRELS AND NUTS	STAINLESS STEEL SS304
11	AIR RELIEF VALVE	BRASS
12	UPPER BEARING	NSK 204
13	FILTER SPRINGS	STAINLESS STEEL SS304
14	ANTI VIBRATION SUPPORTS	NBR RUBBER
15	SHELL BASE	STAINLESS STEEL SS304
16	FILTER SHELL	STAINLESS STEEL SS304
17	VOLUTE PUMP	NICKEL PLATED CAST IRON HT200
18	IMPELLER	GCR15 STEEL
19	BOTTOM COVER OIL CHAMBER	NICKEL PLATED CAST IRON HT200
20	UPPER SEAL	GRAPHITE + SILICON
21	BOTTOM MOTOR COVER	NICKEL PLATED CAST IRON HT200
22	STATOR	COOPER
23	UPPER MOTOR COVER	CAST IRON HT200
24	NUT	STAINLESS STEEL SS304
25	MOTOR CASING	STAINLESS STEEL SS304
26	CABLE PRESS	STAINLESS STEEL SS304
27	FLAP VALVE O RING	NBR RUBBER
28	THERMAL PROTECTOR	ASSEMBLY
29	OIL DRAIN SCREW	STAINLESS STEEL SS304
30	BOTTOM MECHANICAL SEAL	NBR RUBBER
31	LOWER SEAL	GRAPHITE + SILICON
32	BOTTOM BEARING	NSK 202
33	UPPER MOTOR O RING	NBR RUBBER

Sustainability and energy saving.

Why not take care of what is ours? GALIM USA™ LLC. Reinvented the concept of sewage pumping. The industry strives to pump more and more without caring what it sends to the plants, it saturates them with elements that they cannot process. GALIM USA™ LLC. Sewage pumps are designed to allow the passage of organic solids, the rest of the elements remain in the tank. Organic material is not what causes the jamming on the pipes, causing great damage to properties and loss of property. GALIM USA™ LLC. is the solution to taking care of the planet and to reduce the emission of greenhouse gasses and avoid large costs.



Protective Shell.

Built in SS 304 stainless steel with a thickness of 1.5mm. It was designed for the passage of solids, mainly organic waste and human waste. The layout of the drilling holes has been specially designed for the passage of decomposed fecal matter and degraded by contact with water.

The perforations are distributed in such a way that in the lower area (next to the suction area) their size decreases, preventing heavy solids such as wires, glass, irons and other large objects from entering. This patented shell is designed for one of the pump's most demanding moments; the start-up. This is when the pump demands maximum power, when sediment and solids accumulate in the intake, it could lock the turbine and block the motor. The shell avoids this extreme situation by removing any risky solid from the pump's impeller and avoiding sedimentation inside of it.



Critical zone

Spring Barrier made in stainless steel.

The innovation of the spring barriers is fundamental, especially because of the problem caused by wipes, feminine pads, and hygiene pads in general. These types of solids could jam the drilled holes, blocking the entrance of water. The barriers assure that these products don't make contact with the drilled hole (generating a space between the shell and the solid) being rejected and pushed by the constant movement of rising and emptying of the water. By not having any straight line, it eliminates any possibility of jamming and interruption of the start and work of the pump. The usual jam items are feminine pads, tampons, diapers, disinfectant baskets, toys, wires, screws, cutlery, bags, ropes, branches and wood.



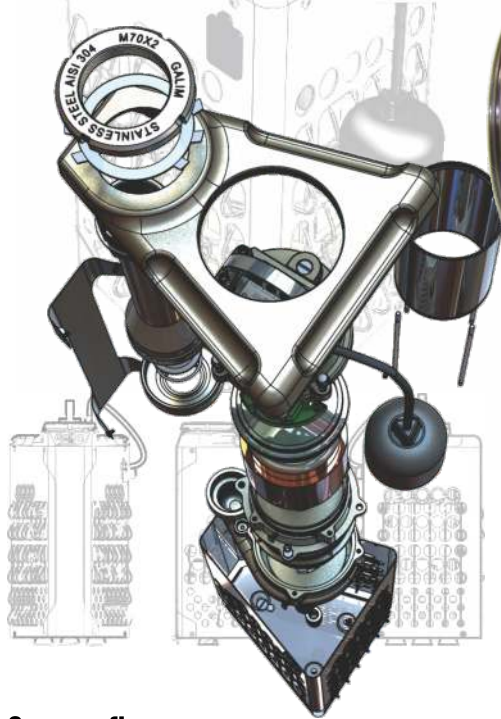
Twipes, pads, diapers, feminine products, and cleaning products are one of the biggest problems to the environment, due to them being made out of non biodegradable materials, causing major troubles and jamming in the main sewage plants, sewers, and sewage pumps.

Its synthetic composition is more similar to a plastic than a paper since they have polyester, cotton and take approximately 600 years to biodegrade if they come to a natural environment. Our exclusive and innovative design separates dirty and sewage water from the wipes and pads.

A standard sewage tank with dimensions of 21" x 24", of approximately 200 gallons holds around 1,200 wipes.

Design

Our pumps were designed, developed, tested, and assembled in the USA under the highest quality requirements ensuring a fluid, after-sales assistance, and confidence guarantee.



Sewage flow.

The protective shell is built in stainless steel AISI 304 with 1/16" thickness that generates an enveloping, protective, and flow filtering space, unique in the market.

Sewage fluid flows along with dirt and the solids around the shell without covering it. (non-clogging)

The quantity, size, and layout of the drilled holes are designed for the pump to preserve constant flow

The spring barriers are built in stainless steel AISI 304 that act as a separating barrier. They assure there's space for the water to come in, despite being jammed with wipes and dirt.

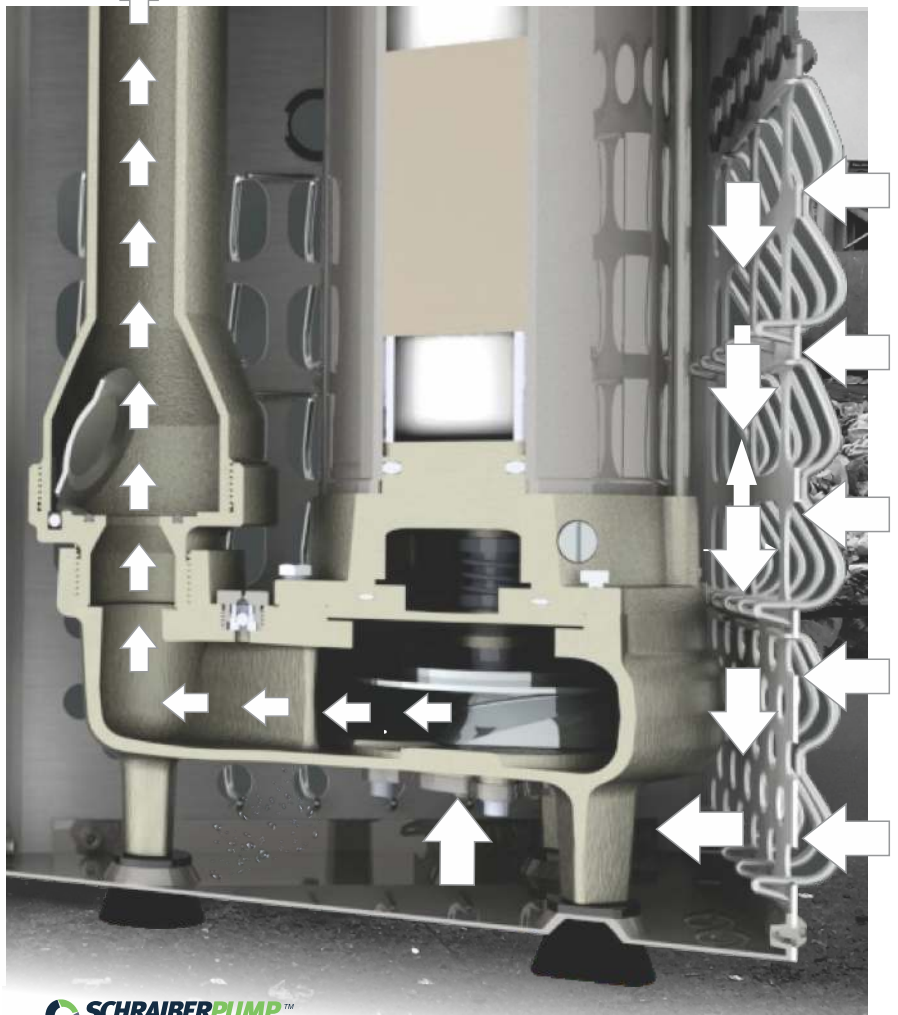


Flap Valve GALIM™ USA LLC.

It's incorporated immediately after the volute and it prevents reflux into the sewage chamber.

Allows the passage of spherical solids up to 1".

It is built-in cast stainless steel SS 304.



QUALITY

GALIM LINE
UNCLOGGABLE SEWAGE PUMP



STAINLESS STEEL SS304 IMPELLER



CAST IRON HT200 NICKEL PLATED

