

4" MOTOR

4" DEEP WELL MOTOR

MOTOR

SS304 Stainless steel casing.

304 Stainless steel oil chamber.

304 Stainless steel shaft.

Cooper winding.

Class F insulation.

Thermal protector (for 1 phase).

Stainless steel screws, nuts and washers.

Available in 115/ 230v 1 phase.

Available in 230v 3 phase.



19591 NE 10th Ave - Miami, FL 33179 - BAY F & G
(786) 233-4203

www.schraiberpumpusa.com
sales@schraiberpumpusa.com

ELECTRICAL DATA

4" MOTOR 4" DEEP WELL MOTOR

MODEL	Type	Phases	Hp	Amp	volt
MS405 2W	2 wire	1	0.5	4.5	230v
MS410 2W	2 wire	1	1	8	230v
MS415 2W	2 wire	1	1.5	10	230v
MS420 2W	2 wire	1	2	12.5	230v
MS430 2W	2 wire	1	3	17	230v

MODEL	Type	Phases	Hp	Amp	volt
MS410CM	3 wire	1	1	8	230v
MS415CM	3 wire	1	1.5	10.2	230v
MS420CM	3 wire	1	2	12	230v
MS430CM	3 wire	1	3	16	230v

MODEL	Type	Phases	Hp	Amp	volt
MS410CT	-	3	1	3	3 x 230v
MS415CT	-	3	1.5	4.2	3 x 230v
MS420CT	-	3	2	6	3 x 230v
MS430CT	-	3	3	6	3 x 230v
MS455CT	-	3	5.5	13	3 x 230v
MS475CT	-	3	7.5	15	3 x 230v

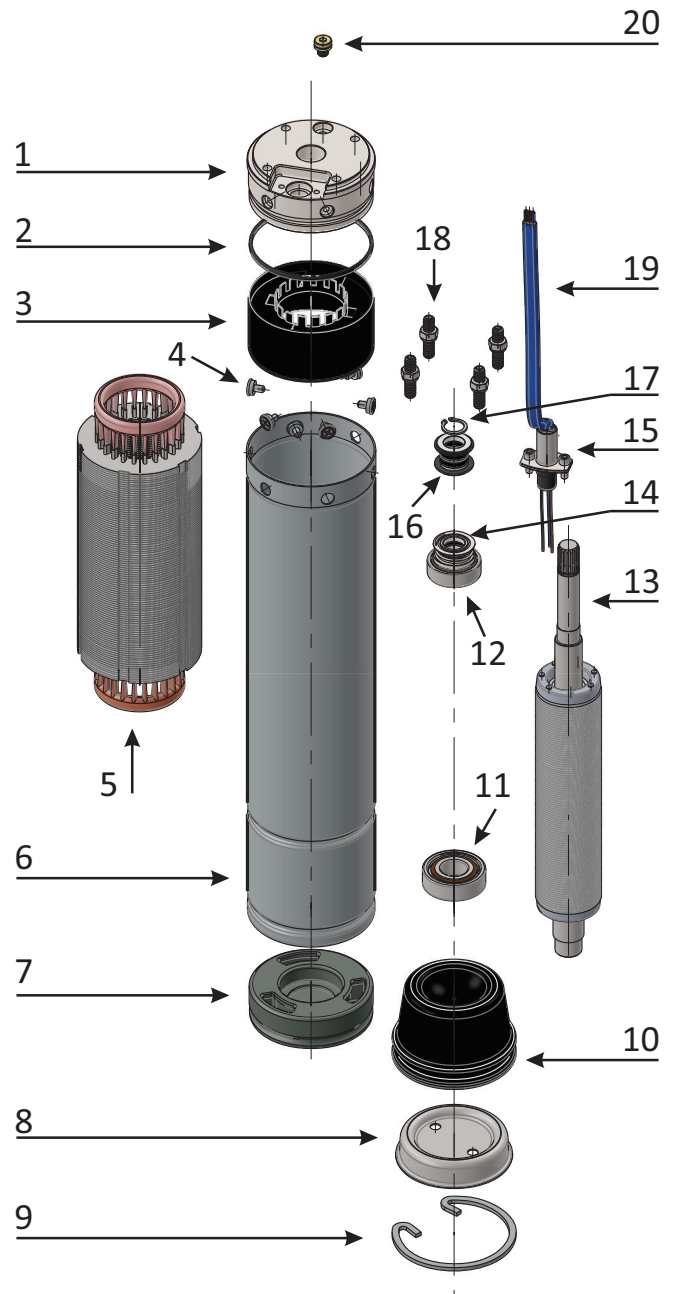
E Board	Hp
TAS410	1
TAS415	1.5
TAS420	2
TAS430	3



PARTS

4" MOTOR 4" DEEP WELL MOTOR

ITEM	PART NAME	MATERIAL
1	Upper Bearing holder	Stainless Steel
2	O- Ring	NBR
3	Protector	Polyamide
4	Housing bolt	Stainless Steel
5	Stator	Assembly
6	Housing	Stainless Steel
7	Lower bearing holder	Assembly
8	Oil cap stopper	Stainless Steel
9	Oil cap seeger	Stainless Steel
10	Oil cap	Plastic
11	Lower bearing	Assembly
12	Upper Bearing	Assembly
13	Shaft	Stainless Steel
14	Lower seal	Sic/graphite
15	Terminal	Assembly
16	Upper seal	NBR
17	Seeger	Stainless Steel
18	Fixing screws and nuts	Stainless Steel
19	Cable	Assembly
20	Plug	Brass



CHARACTERISTICS

4" MOTOR
4" DEEP WELL MOTOR

